

# 2019- Elliott 5.9 Traveler Series – Sailing Instructions

## 2019 Elliott 5.9 Traveler Series

### Sandspit

### Sandspit Yacht Club

*The Organising Authority is the Sandspit Yacht Club, in conjunction with the Elliott 5.9 Owners Association.*

#### **SAILING INSTRUCTIONS**

**1**

#### **RULES**

##### **1.1**

The regatta will be governed by the rules as defined in *The Racing Rules of Sailing*

##### **1.2**

The Yachting New Zealand Safety Regulations Part 1, shall apply.

##### **1.3**

The current Elliott 5.9 class rules will apply.

##### **1.4**

Measurements may be taken to ensure boats meet class rules and safety regulations. A safety check may be made on any boat at any time during the event. A boat and or its equipment may be inspected at any time for compliance with the E 5.9 Class Rules.

##### **1.5**

All boats must supply and display clearly visible two digit bow numbers with a minimum height of 350mm. The numbers to be used by each boat are those approved by the E5.9 Class Association and will generally be the last 2 digits of the sail number – e.g. “00”. These must be positioned within 1 metre of the bow, on the port and starboard sides of the hull, above the waterline.

##### **1.6**

All boats must be in measured condition, hold a current measurement certificate and carry correctors where applicable. Boat weights, There will be no regatta weighing, however all boat and keel weights must have been verified since 1 January 2015. Any significant configuration changes since weighing will require a re-weigh.

##### **1.7**

Soling style hiking technique (hobbling) is not permitted, and hobbles or any other device that facilitates the adoption of such techniques must not be fitted to yachts. Weight jackets are not permitted.

#### **2A**

#### **CODE OF CONDUCT**

Competitors shall comply with any reasonable request from a regatta official.

## **2B**

### **NOTICES TO COMPETITORS**

Notices to competitors will be posted on the official notice board located at the Sandspit Yacht Club

### **CHANGES TO SAILING INSTRUCTIONS**

Any change to the sailing instructions will be notified to competitors before 0900 on the day it will take effect, except that any change to the schedule of races will be posted by 1800, or at end of protest time, whichever is earlier on the day before it will take effect.

## **4**

### **SIGNALS MADE ASHORE**

#### **4.1**

Signals made ashore will be displayed on a flagpole adjacent to the Sandspit Yacht Club.

#### **4.2**

When flag AP is displayed ashore, '1 minute' is replaced with 'not less than 60 minutes' in the race signal AP. When AP over flag B is displayed boats shall not go afloat.

## **5**

### **SCHEDULE OF KEY EVENTS AND RACES**

#### **5.1**

##### **Measuring and Registration**

None (but see Rule 1.1 - 1.7 above)

#### **5.2**

##### **Briefing**

0900 Saturday 28th September 2019 - Launching Ramp Sandspit Yacht Club

#### **5.3**

<b>Day:</b>	<b>Date:</b>	<b>Max No of Races</b>	<b>Time of First Warning</b>
-------------	--------------	------------------------	------------------------------

**Signal:**

Saturday	28th September	8	1025 hrs
----------	----------------	---	----------

Sunday	29th September	8	0955 hrs
--------	----------------	---	----------

MAXIMUM of 10 Races to Complete the Regatta

#### **5.5**

On 29th September no warning signal will be made after 1500 hrs.

#### **5.6**

A Prize giving will be held following racing on 29th September 2019

## **CLASS FLAG**

### **6.1**

Class flag will be:

*Class Flag*

E5.9 Class Logo on Black Flag

### **7**

## **RACING AREAS**

### **7.1**

The Race Area will be on the waters of Kawau Bay

## **THE COURSES**

### **8.1**

The diagrams in Attachment A show the courses, including the approximate angles between legs, the order in which marks are to be passed, and the side on which each mark is to be left.

### **8.2**

No later than the warning signal, the race committee signal boat will display the course to be sailed. The course will be displayed on the course board from the committee boat

### **9**

## **MARKS**

### **9.1**

Marks 1, 1A, 2S and 2P will be yellow tapered cylindrical buoys

### **9.2**

New marks, as provided in instruction 12.1, will be orange tapered cylindrical buoys

### **9.3**

The starting and finishing marks will be the race committee signal boat at one end and an orange round tear drop buoy at the other end.

### **9.4**

A race committee boat signalling a change of a leg of the course is a mark as provided in instruction 12.2.

### **10**

## **AREAS THAT ARE OBSTRUCTIONS**

Not Applicable

### **11**

## **THE START**

### **11.1**

The starting line will be between a staff displaying an orange flag on the starting mark at the starboard end and the port-end starting mark.

### **11.2**

A boat starting later than 4 minutes after her starting signal will be scored Did Not Start without a hearing. This changes rules A4, *Low Point System*, and A5, *Scores Determined By The Race Committee*.

### **11.3**

If flag U has been displayed as the preparatory signal, no part of a boat's hull, crew or equipment shall be in the triangle formed by the ends of the starting line and the first mark during the last minute before her starting signal. If a boat breaks this rule and is identified, she shall be disqualified without a hearing but not if the race is restarted or resailed or postponed or abandoned before the starting signal. This changes rule 26 Starting Races. When flag U is used as the preparatory signal rule 29.1 Individual recall does not apply. The scoring abbreviation for a flag U penalty is UFD. This changes rule A11 Scoring Abbreviations.

### **12**

#### **CHANGE OF THE NEXT LEG OF THE COURSE**

##### **12.1**

To change the next leg of the course, the race committee will lay a new mark (or move the finishing line) and remove the original mark as soon as practicable. When in a subsequent change a new mark is replaced, it will be replaced by an original mark.

##### **12.2**

Except at a gate, boats shall pass between the race committee boat signalling the change of the next leg and the nearby mark, leaving the mark to port and the race committee boat to starboard. This changes rule 28, *Sailing The Course*.

### **13**

#### **THE FINISH**

##### **13.1**

The finishing line will be between a staff displaying an orange flag on the finishing mark at one end and the course side of the finishing mark at the other end.

### **14**

#### **PENALTY SYSTEM**

##### **14.1**

Rule 44.1, taking a Penalty, is changed so that the Two-Turns Penalty is replaced by the One-Turn Penalty

### **15**

#### **TIME LIMITS AND TARGET TIMES**

##### **15.1**

Time limits and target times are as follows:

Race Target time 45 Mins

*E5.9 Class Time limit 60 Mins*

*Mark 1 Target time limit 20 Mins*

*If no boat has passed Mark 1 within the Mark 1 time limit the race will be abandoned. Failure to meet the target time will not be grounds for redress. This changes rule 62.1(a), Redress.*

##### **15.2**

Boats failing to finish within 20 minutes after the first boat sails the course and finishes will be scored Did Not Finish without a hearing. This changes rules 35, Time Limit And Scores, A4, Low Point And Bonus Point Systems, and A5, Scores Determined By The Race Committee.

## **PROTESTS AND REQUESTS FOR REDRESS**

### **16.1**

Rule 44.1 is changed to permit a boat that has broken a rule of Part 2 or rule 31 to take a penalty after racing but prior to any protest hearing. Her penalty shall be a scoring penalty as calculated in rule 44.3(c) equal to 40% of the number of entries in her fleet or 50% of the difference between her finishing position and the number of entries in her fleet, whichever is less

### **16.2**

Protest forms are available from the PRO. Protests and requests for redress or reopening shall be delivered there within the appropriate time limit.

### **16.3**

The protest time limit is 90 minutes after the last boat has finished the last race of the day or the race committee signals no more racing today, whichever is later.

### **16.4**

Notices will be posted no later than 15 minutes after the protest time limit to inform competitors of hearings in which they are parties or named as witnesses. The venue for any hearing will be advised to parties who are involved in a hearing a reasonable time before any hearing commences.

### **16.5**

Notices of protests by the race committee or protest committee will be posted to inform boats under rule 61.1(b), *Informing the Protestee*.

### **16.6**

N/A

### **16.7**

Breaches of instructions 11.2, 18, 21, 23, 24 and 25 will not be grounds for a protest by a boat. This changes rule 60.1(a), *Right to Protest; Right to Request Redress or Rule 69 Action*. Penalties for these breaches may be less than disqualification if the protest committee so decides.

### **16.8**

On the last scheduled day of racing a request for reopening a hearing shall be delivered (a) within the protest time limit if the requesting party was informed of the decision on the previous day;

(b) no later than 30 minutes after the requesting party was informed of the decision on that day. This changes rule 66, *Reopening A Hearing*.

### **16.9**

On the last scheduled day of racing a request for redress based on a protest committee decision shall be delivered no later than 30 minutes after the decision was posted. This changes rule 62.2.

## **SCORING**

### **17.1**

3 races are required to be completed to constitute a series.

### **17.2**

(a) When fewer than 6 races have been completed, a boat's series score will be the total of her race scores.

(b) When from 6 to 10 races have been completed, a boat's series score will be the total of her race scores excluding her worst score.

**18**

**SAFETY REGULATIONS**

**18.1**

N/A

**18.2**

A boat that retires from a race or returns to the launching area before she finished the last race of the day shall notify the race committee as soon as possible.

**19**

**REPLACEMENT OF CREW OR EQUIPMENT**

**19.1**

Substitution of competitors will not be allowed without prior written approval of the race committee.

**19.2**

Substitution of damaged or lost equipment will not be allowed unless authorised by the race committee. Requests for substitution shall be made to the committee at the first reasonable opportunity.

**19.3**

Change of sail numbers will not be allowed without prior written approval of the Race Committee.

**20**

**EQUIPMENT AND MEASUREMENT CHECKS**

**20.1**

A boat or equipment may be inspected at any time for compliance with the class rules, including safety requirements, and sailing instructions. On the water, a boat can be instructed by a race committee equipment inspector or measurer to proceed immediately to a designated area for inspection. A safety check may be made on any boat at any time during the event.

**21**

**EVENT ADVERTISING**

Boats shall display advertising supplied by the organising authority as follows if requested

**22**

**OFFICIAL BOATS**

N/A

**23**

**SUPPORT BOATS**

**23.1**

Except when requested to participate in rescue operations, team leaders, coaches and other support personnel shall stay outside areas where boats are racing and are restricted to a 5 knot speed limit, from the time of the preparatory signal for the first start of a sequence of starts until all boats have finished or the race committee signals a postponement or abandonment of all races. The areas the boats are racing in is defined as the area inside the course and within 100 metres of any mark, lay line, starting line, finishing line or any area where any boat that is racing is sailing or may sail.

**23.2**

When the wind is less than 10 knots support boats shall not exceed 5 knots within 500m of the area where boats are racing.

**23.4**

When flag W (with a long sound signal) is displayed on a committee boat all support boats are requested to remain afloat and assist all sailors.

**24****TRASH DISPOSAL**

**A boat shall not discharge rubbish in the water.** Trash may be placed aboard support and race committee boats.

**25****NO HAUL-OUT RESTRICTIONS APPLY****26****RADIO COMMUNICATION****26.1**

Except in an emergency, a boat shall neither make radio transmissions while racing nor receive radio communications not available to all boats. This restriction also applies to mobile telephones.

**26.2**

Race Management Radio Channel is VHF 77

**PRIZES**

Prizes may be awarded at the discretion of the organising committee

**28****DISCLAIMER OF LIABILITY**

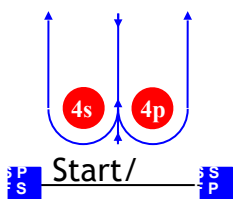
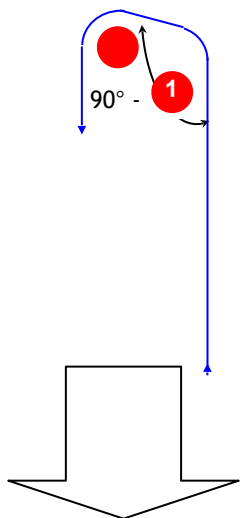
Competitors participate in the regatta entirely at their own risk. See rule 4, *Decision to Race*. The organising authority will not accept any liability for material damage or personal injury or death sustained in conjunction with or prior to, during, or after the regatta.

**29**

Elliott 5.9 Association: Stu Clarke 021 890 067 [stu.clarke@xtra.co.nz](mailto:stu.clarke@xtra.co.nz)

# Course Illustrations - Windward Leeward with offset

LA



## Course: Leeward finish

Course 1

Start - 1 - 1a - Finish

Course 2

Start - 1 - 1a - 2s/2p - 1 - 1a - Finish



## Mark Description

1

1a

4s

4p

Starting mark starboard end

S

Starting mark port end

P

Finishing mark starboard end

Finishing mark port end

S

P

LA WA